



TONLY TLD90

OFF ROAD DUMP TRUCK

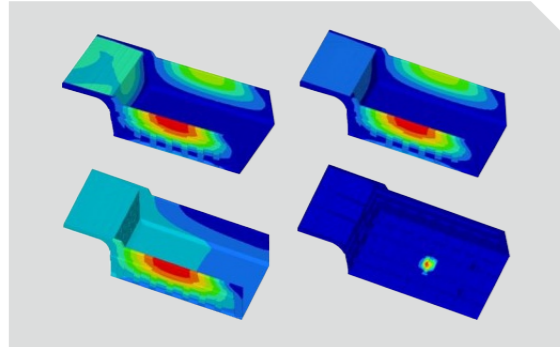
PAYLOAD:	60 TON
CARGO CAPACITY:	30CBM(STANDARD)/36CBM(HEAPED)
ENGINE:	530HP/390KW
AUTOMATIC TRANSMISSION	



SHAANXI TONLY HEAVY INDUSTRIES CO.,LTD.

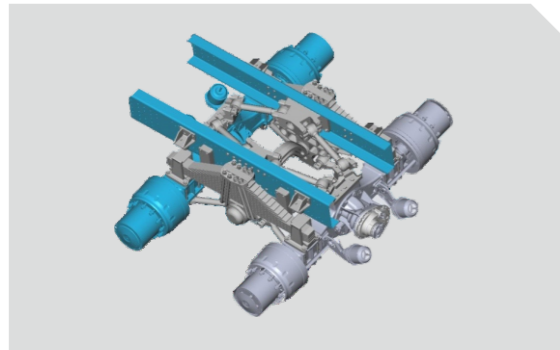
Address: No.2339, Fengchan Road, Fengdong new city, Xi'an City Shaanxi Province, China.
Sales Hotline:+86-029-38001214 Fax:+86-029-38001213
Website: www.tonlyoverseas.com Email:nathan.tang@sntonly.com

Shaaxi Tonly Heavy Industries Co.,Ltd,reserves the right of design changes and internetation.
A parameters and details are subject to the commercial contract and vehicles.



● Cargo body

In line with the characteristics of material, the steel plate with wear-resisting.



● suspension

Leaf spring balance rear suspension, adapts the off-road working condition. Upper & lower double V type guide structure with more load and high reliability.



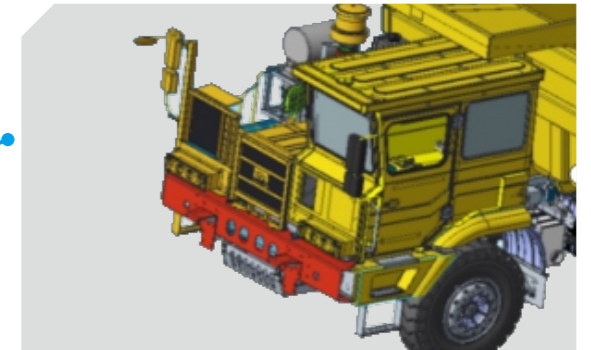
● Tire

Special mining tire for mine only with longitudinal and transverse groove design, which provide excellent grip performance and comfort of operation strong carrying capacity and long service life.



● FOPS/ROPS Certificate

Tonly product is the only one obtained the certificate for big payload through severe test



● Through beam structure

Anti-collision beam + bumper + through beam structure, effectively protects the driver and the vehicle.



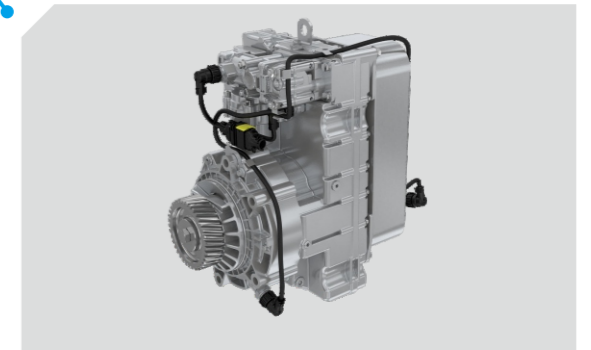
● Intake system

Three stage combined air filter can improve the efficiency of air filtering, and improve the air clearness.



● Steering system

Tonly developed full hydraulic steering system (TONLY owns all patent of this technology), reduce the steering oil temperature, steering operation is lighter, greatly improve the life cycle of the system components, and ensure the truck safety.

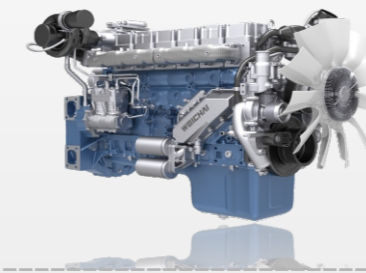


● Hydraulic Retarder

Transmission combined with hydraulic retarder can reduce the speed of the truck when going down a long slope, works long time and high power, reduce the wear out of braking components and extend the tire life time, ensure the operation safety.



TONLY TLD90 Configurations and Characteristics



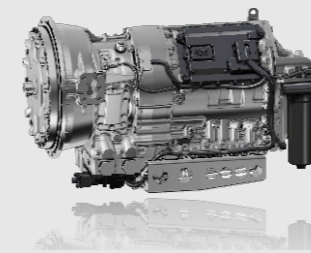
● Engine

WEICHAI (Tier III) engine with stable performance, reliable quality, fuel conservation and environment protection.



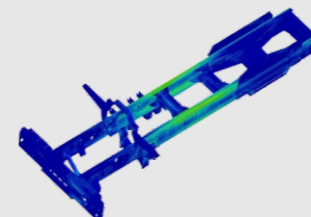
● Axle Assembly

TONLY and HANDE jointly design the special axle for mine transportation. Strengthened single casting axle housing, double reduction. Big torque, high transmission efficiency and high reliability.



● Transmission

FC6A250p(R) automatic control transmission, high reliability, convenient operation, high efficiency, excellent acceleration performance.



● Main frame

High-strength steel plate is used for flexible chassis frame for mine, which has national patent. The impact abrasion is strong with long service life.



● Lifting Device

HYVA hydraulic lifting system, strong lifting power, stable lifting performance.

**TONLY TLD90
Technical Parameter**

Complete technical parameter	
Brand	Tonly
Manufacturer	Shaanxi Tonly Heavy Industries Co.,Ltd.
Drive mode	6×4
GVW (t)	90
Rated loading capacity (t)	60
Kerb mass (t)	30
Overall dimension	9150X3640X3975mm
Minimum turning radius	11m
Wheelbase	4075+1550mm
Wheel tread	2680mm/2500mm
Minimum ground clearance	305mm
Maximum height of lifting cargo body	8370mm
Maximum angel of lifting cargo body	53°
Loading height	3550mm
Brake distance	<15m (V=30km/h)
Maximum gradeability	32%
Maximum speed	42km/h
Engine	
Model	WP13G530E310
Manufacturer/Country	WEICHAI/China
Total Horse power(HP/KW)	530hp (390KW)
Transmission	
Model	FC6A250p®
Manufacturer/Country	Xi'an FC Intelligent Transmission Co., Ltd. /China
Axle	
Model	20t steering front axle, 2x35t drive middle and rear axle
Manufacturer/Country	Shaanxi Hande Axle Co., Ltd./China
Tire/Rim	
Tire Model	14.00R25
Rim size	10.00-25
Container	
Bottom plate material / thickness	NM400/18mm
Rear plate material / thickness	NM400/10mm
Front plate material / thickness	T700/12mm
Side plate material / thickness	T700/12mm
Loading volume	Struck 30.4m ³ /2:1 Heaped 36.7m ³
Loading volume (Coal body)	Struck 54m ³ /2:1 Heaped 62m ³

Hydraulic system	
Model	FC179
Manufacturer/Country	HYVA Machinery (Yangzhou) Co., Ltd./China
Steering gear	Full Hydraulic Steering
Lifting time for cargo body	33s
Falling time for cargo body	30s
Weight distribution	
Empty payload	
Front axle	14000kg
Rear axle	16000kg
Total weight(50% fuel)	30000kg
Heavy payload	
Front axle	20000kg
Rear axle	70000kg
Total weight	90000kg

