



Watching Video

Concrete Pump / Boom Pump

ECP42CX-5

Boom Type

5 section ZR folding

Vertical Reach

42m

Horizontal Reach

36.3m

Depth Reach

27.7

Delivery Pipe Diameter

125mm

Slewing Range

360°

Outrigger

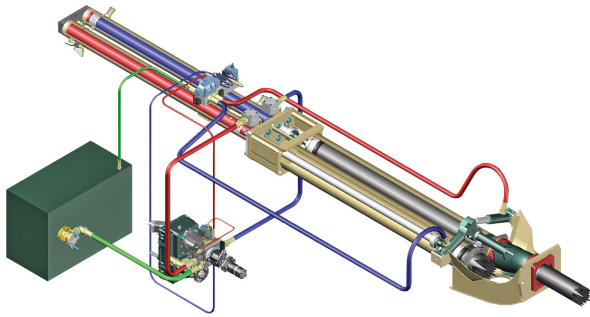
X-extension (Front)

Swing-type (Rear)



EVERDIGM

FFH SYSTEM (Free Flow Hydraulic)



Direct connecting main pump and hydraulic cylinders improve pumping efficiency

SN valve controls peak pressure

Less peak pressure

No need of big oil tank

Cut down maintenance cost

Control zero to full all output

Easy and precise operation

POH valve makes switching speedy and smooth

Less Boom bouncing

No hydraulic oil overheated

Longer life on consumable parts

Applying Suction filter

Prevent contamination in main pump

Centralized pumping controller

Easy access and maintenance

FEATURES

PUMPING UNIT

Closed-loop System

Inductive Proximity Switch with Indicator

Single Lip Concrete Piston

Hard-chromed Concrete Cylinders

BOOM & STRUCTURE

Diagonal Extension Front Outrigger

Swing Rear Outrigger

Outrigger Pilot Check Valves

Hydraulic Motor and Gear at Boom Slewing

High Pressure End Hose (Both End Coupling, 3m)

Boom & Deck Pipe Dia. 125mm

Greasing Port on Boom Link and Pedestal

Bubble Gauge on each Side of Unit

Cleaning Port and Sponge Ball

Water Pump, Cleaning Hose, Water Tank

Outrigger Pads with Compartment

Night Light Kit on Pedestal

HOPPER

EZ Clean Hopper with Hi Manganese Paddle

Auto Lubrication System for Hopper

600 liter Volume Hopper

S-tube 200mm to 180mm

Tungsten Carbide for Wear Ring and Plate

Night Light Kit for Hopper

CONTROL KIT

Cable Remote Control (40m Cable)

Radio Remote Control, Proportional

Remote ON/OFF Pumping

Remote Engine ON/OFF

Infinite Variable RPM Control

Boom - Manual Control Block and Remote Control

Outrigger - Manual Control Block on each Side of Unit

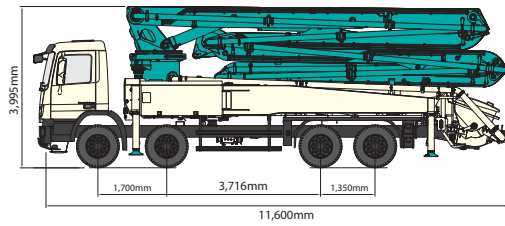
E-stop and Horn Switch

Electric Control Box with Separate Local Controller

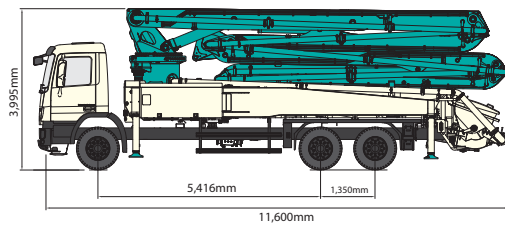
Pneumatic Solenoid Valve for PTO Control

SPECIFICATIONS

DIMENSIONS



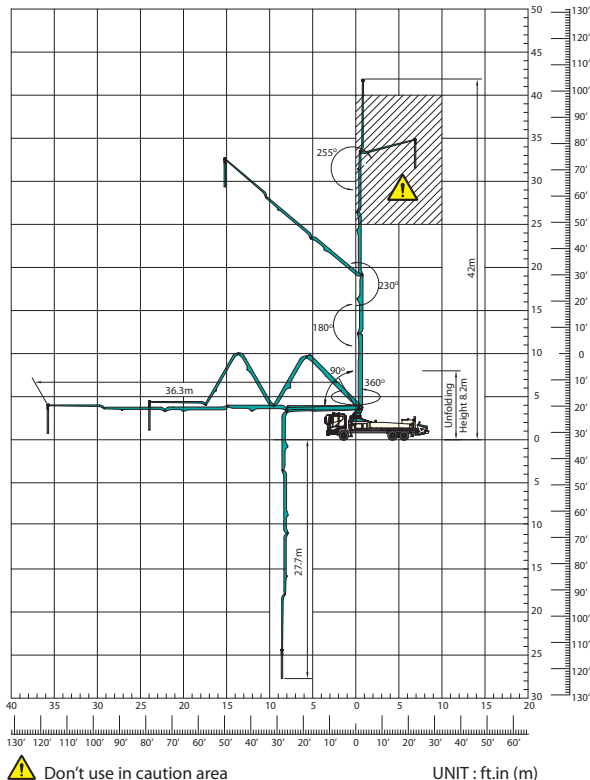
| | |
|--------------------|----------|
| Front Axle Payload | 12,037kg |
| Rear Axle Payload | 18,103kg |



| | |
|--------------------|----------|
| Front Axle Payload | 8,927kg |
| Rear Axle Payload | 20,016kg |

* Weight and dimension figures here are subject to change on various chassis option and additional axle application etc.

WORKING RANGE



PUMP

| | | |
|-------------------------------|----------------------------------|-----------------------------------|
| Pump Cell | 2114 | 2116 |
| Hydraulic Control System | Closed Free Flow Hydraulic | |
| Hydraulic Main Pump | A4VG180 | A4VG125HDx2 (Tandem) |
| Concrete Cylinder | Dia. 230mm Stroke 2,100mm | |
| Drive Cylinder | Tube Dia.230mm | Tube Dia. 230mm Stroke 2,100mm |
| Theoretical Concrete Output | 140m ³ h | 160m ³ h |
| Theoretical Concrete Pressure | 70bar | 85bar |
| Transfer Tube Type | S-tube, S2018 (Dia 200 to 180mm) | |
| Volume of Hopper | 600L | |

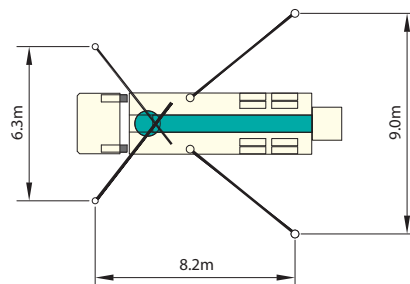
BOOM

| | |
|-----------------------|----------------------|
| Boom Type | 5 section ZR folding |
| Max. Vertical Reach | 42m |
| Max. Horizontal Reach | 36.3m |
| Max. Depth Reach | 27.7m |
| Unfolding Height | 8.2m |
| End Hose | 3m |
| Delivery Pipe Dia. | 125mm |
| Slewing Range | 360deg. |

OUTRIGGER

| | |
|---|---------------------------|
| Front Outrigger Type (Full Spreading Width) | Diagonal Extension (6.3m) |
| Rear Outrigger Type (Full Spreading Width) | Swing (9m) |

OUTRIGGER SPREAD



EVERDIGM

EVERDIGM is large sized company with \$250M turnover providing customers across the world with its quality products. EVERDIGM has been working and growing based on the platform of advanced quality, professionalism and real satisfaction. Standing behind the customers taking responsibility at all stage its product life cycle is EVERDIGM's commitment.

Build the Future

The spirit, "build the future", enables EVERDIGM to make a remarkable growth over 80 countries now. EVERDIGM offers the best value concrete pump which is key to build the brighter future for dealers and customers.

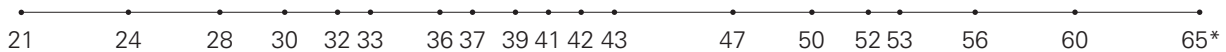
Concrete Pump

- Free Flow Hydraulic System
- Boom Pump Ranging from 21M to 65M
- Placing Boom of Various Design
- High Pressure Trailer and Line Pump



Truck Mounted Boom Pump Line-up (Max. Vertical Reach)

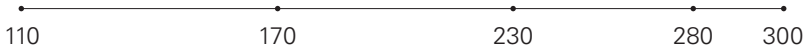
Unit : m



*Plan to release in 2013

Trailer Pump Line-up (Max. Concrete Pressure)

Unit : bar



Line Pump Line-up (Max. Concrete Pressure)

Unit : bar



Placing Boom Line-up (Max. Horizontal Reach)

Unit : m



Distributed by

Head Office & Factory
332-3, Janggwan-Ri, Jincheon-Eub, Chungcheongbuk-Do, Korea
Tel_+82-43-530-3300 Fax_+82-43-530-3429

Sales & Marketing Office
Room #1203, Woolim Lion's Valley 2, 680, Gasan-Dong, Geumcheon-Gu, Seoul, Korea
Tel_+82-2-801-0800 Fax_+82-2-801-0899

@EVERDIGM Corp. Printed in Korea

